



Electric



Personal



Mobility

User Manual

Model No.: L8

Congratulations On Your New Model L8 scooter!

We are happy you chose to ride new L8 electric scooter.

We hope you find it to be a great riding experience, adding efficiency and fun to your daily commuting.

WARNINGS & GENERAL INFORMATION

This manual was written to help you understand the proper use and maintenance of MODEL L8 electric scooter. It is important for you to understand your new MODEL L8 electric scooter; its features and performance, so that you will enjoy the most from your first and every ride. Also, it is important that your first ride with MODEL L8 will be in a remote location, without any obstacles.

Always follow the local laws and regulations.

- Never ride your scooter in conditions of poor visibility.
- Do not do stunts, wheelies or jumps. They will increase your chances of injury and damage your MODEL L8.
- Never carry passengers

The responsibility for MODEL L8 maintenance is yours, and will help reduce risks of injuries. Therefore, read this manual and follow it's instructions, they will help you avoid these risks.

We're not liable for incidental damages or consequential damages due directly or indirectly to the use of this product.

MODEL L8 FEATURES





1210MM

1160MM

1140MM



470MM

MODEL L8 MAIN PARTS

Brake Lever



Horn

Display

Power on

Throttle



THROTTLE



ON/OFF button




MODE button




Battery status

THROTTLE POWER ON


Pressing  to power the scooter on.


THROTTLE POWER OFF

Press  for three seconds to shut down the system.



AUTO OFF

After five minutes of non-using any function, the scooter will automatically shut down.

In power on condition, pressing  by turns, we can find **TRIP**, **ODO**, **VOL** on the LCD display. **TRIP** is Single mileage, **ODO** is cumulative mileage, **VOL** is battery voltage

Pressing  by turns to change the speed mode, **1** is slow speed, **2** is medium speed, **3** is fast speed.

Parameter settings

Pressing  together with  at the same time, will enter the instrument parameter setting interface.

First of all we can see **P00**, then press  by turns, we can find **P01, P02, P03, P04, P05, P06, P07, P08, P09**

P00: Wheel diameter setting

P01: Under-voltage setting

P02: Number of pole pairs setting

P03: Speed signal selection setting

P04: Km / Mile selection setting

P05: Non-zero start and zero start selection settings

P06: Cruise and non-cruise selection settings

P07: Soft start and hard start selection settings

P08: Speed limit adjustment in percentage

P09: EBS brake strength adjustment

SERIAL NUMBERS

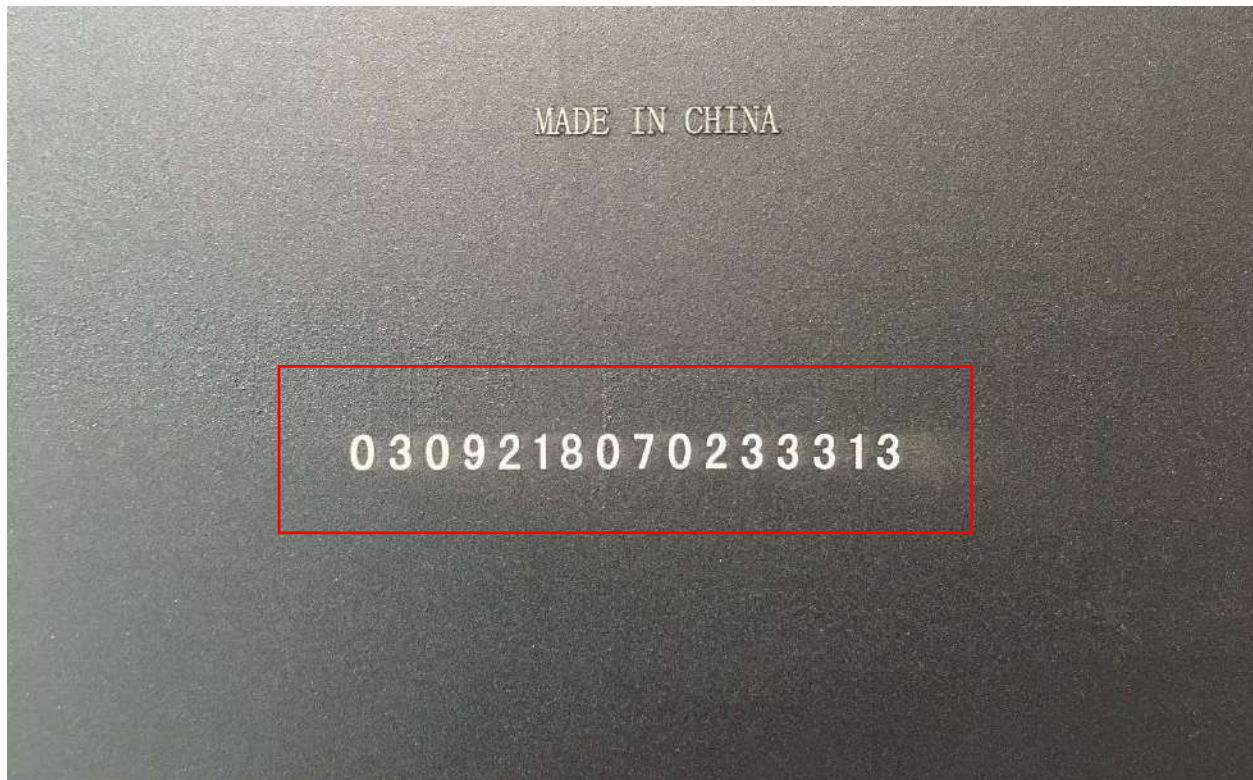
RECORD SERIAL NUMBERS:

Write down the serial number of your Model L8. Keep this information separately and in a safe place. Each MODEL L8 has a unique serial number. These numbers can provide information that may be useful later on for insurance claims and in case of loss or theft.

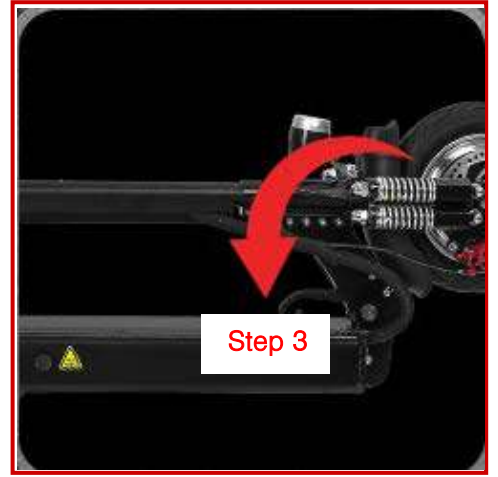
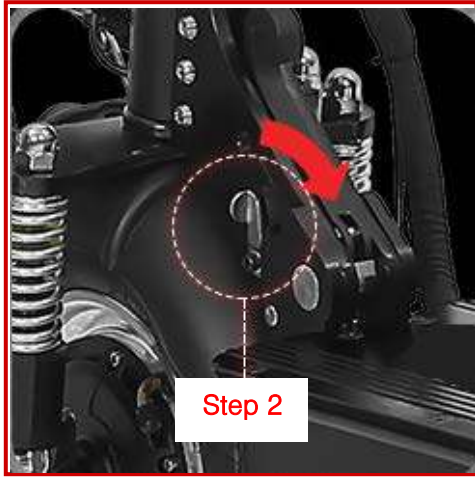
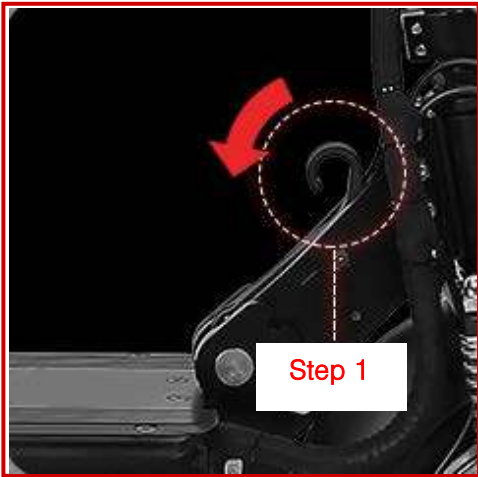
To find your MODEL L8 serial number:

1. The number is on the backside of the board, for example as below:

Serial number: **030921807023313**



HOW TO FOLD THE SCOOTER



CHARGING AND BATTERY

Your Model L8 has an external charger.

Connect the charging cable to Model L8's charging socket under the footboard, on the right side at the rear. Then connect the charger's electric cable to an electrical outlet.

Charging Light **Red** - Battery is charging.

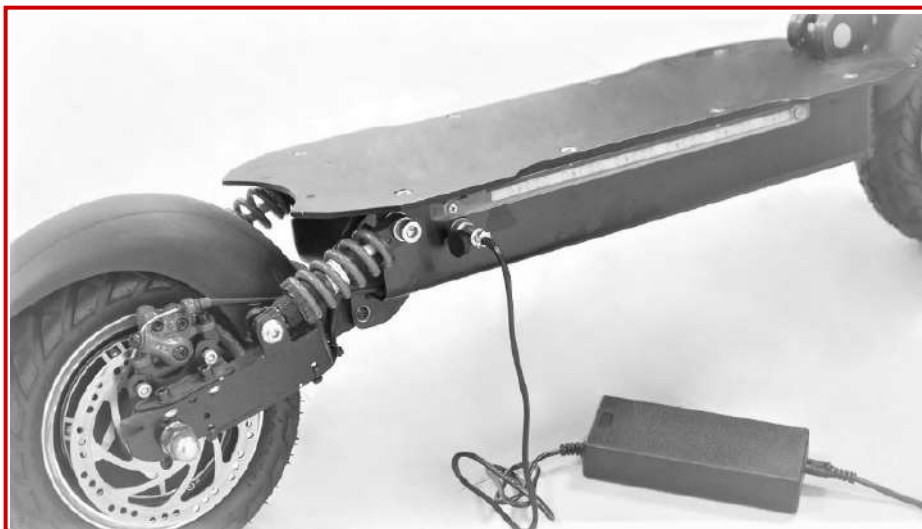
Charging Light **Green** - Charging is complete.

Avoid long periods of time with an uncharged or fully charged battery.

To maximize your Model L8's battery performance, fully charge it for 7 hours, once a month, or after each use of 24 hours.

Do not attempt to open the battery. Do not insert anything in the battery and do not attempt to open its case with any tool. Inserting an object into openings or in the battery can cause electrical shock, injury, burns or fire. Any attempt to open the battery case will damage it and cause release of dangerous toxic substances.

Charge the battery only using tools approved by Kerry Motors. Remove the battery and carry Model L8 according to all applicable local and national requirements.



SAFETY DRIVING ATTENTION

SAFE DRIVING:

Practice your first ride on the MODEL L8 in an open space with no obstacles to disturb you so you can get to know your MODEL L8 before driving it.

Please wear a safety helmet and some other protective equipment to avoid possible injury

Check the fording mechanism and make sure the MODEL L8 has been fully expanded and also the safe lock clip has been entered into right position before driving.

Check the brake and make sure the brake system is in working condition.

Check the battery status indicator and make sure the battery is enough to support your travel.

DRIVING TECHNIQUE:

Foot Position - before riding out your foot as close as possible to the front section of the scooter and your other foot on the plate. Make sure that your driving route is clear. To start riding propel yourself forwards (as on non-motorized scooters) with your foot that is on the plate.

SPECIFICATION

Specification		
Size	Overall size (MM)	1160*570*1210 mm
	Size after folding(MM)	1140*220*470 mm
	Carton size(MM)	1200*270*520 mm
Weight	Max. Loading (KG)	150kg
	Net weight(KG)	22kg
Application	People Age	Adult
Speed	Top speed(KM/H)	40km/h
	Range (KM)	Around 40km
	Grade Ability	30 degree
	Working temperature	-5°C~40°C
	Storage temperature	-10°C~40°C
Battery	Battery type	18650 Lithium battery
	Rated voltage (V)	48V
	Input voltage(V)	54.6V
	Battery capacity (AH)	15Ah
Motor	Motor type	DC brushless motor
	Motor power	800W
	Rated output power	800W
	Rated voltage	48V
Charger	Rated power (W)	109.2W
	Input voltage(V)	100-240VAC
	Output voltage(V)	54.6V
	Rated current	2A
	Charging time	7 Hours
Other features	Tire size	10 inch tubeless tires
	Frame material	Aluminium alloy 6061
	Waterproof	IP54
	Suspension	Front suspension*2 + Rear suspension*2
	Display	color display
	Speed up	Throttle
	Brake	front disc brake + rear disc brake + electronic brake
	Color	Black

